

Beating the Bounds 10-12 May 2021: a brief tour of Pagham Parish with Alison Blenkinsop

Pagham beach eastwards to Aldwick, and into the Bay Estate



Pagham beach is popular with the fishing community. They report finding sea bass and mackerel, and smoothhounds in summer. Visit the website *Sporting Fish* and search for Pagham, and watch the video entitled *Pagham Beach Fishing*, placed on YouTube in May 2014. The beach keeps changing, so it looks different now!

<https://www.youtube.com/watch?v=ZlaAUV0ERal&t=30s>



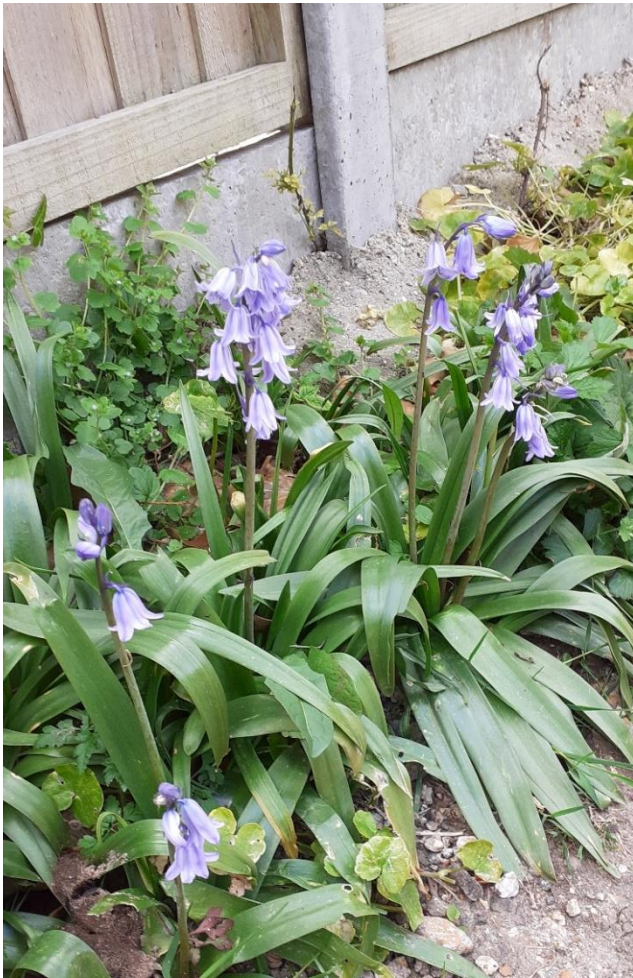
Engraved directions on the top of this pillar are helpful: on a clear day, there are views from Selsey to beyond Rottingdean.



A gift for bookworms at The Fairway corner.

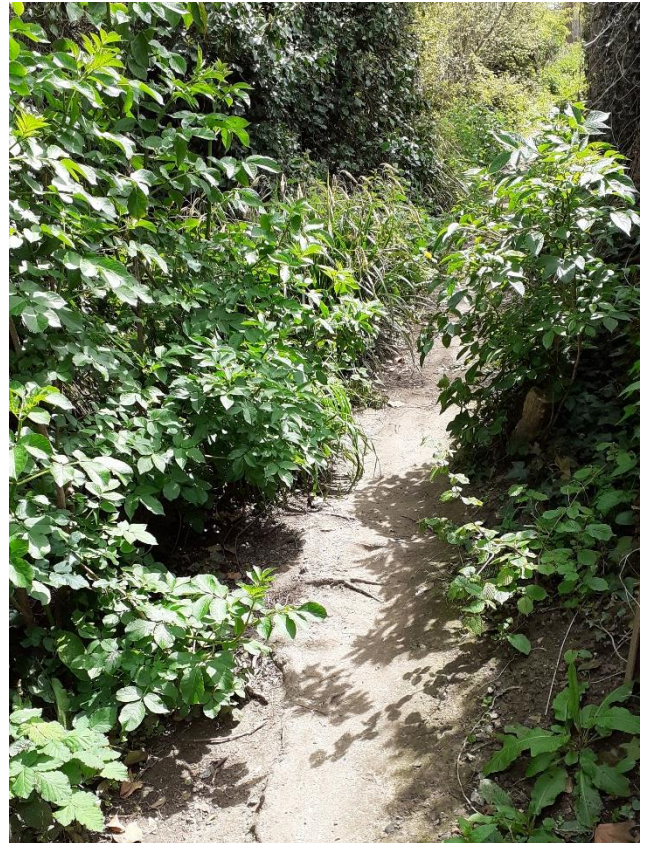


Approaching the northern boundary at Lagness, along Footpath 132 from Hewarts Lane

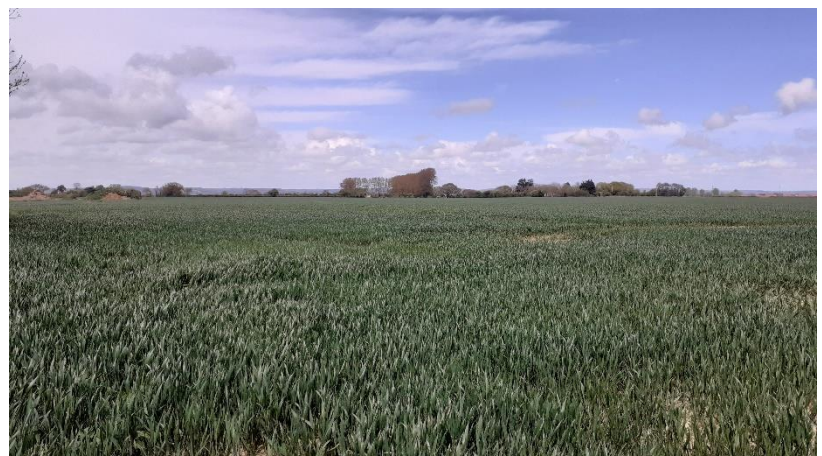


English bluebells!

Looking south: the path is getting overgrown with lush vegetation, so more walkers are needed to keep it clear!



The farmland of north Pagham, with its view of the South Downs, is very fertile and produces seasonal vegetables. In previous years, Church members on their Beating the Bounds journey have walked through the fields for a picnic lunch at Copyhold Farm, before crossing Pagham Road and later turning southwards on the homeward stretch. (See below for last year's report.)



The western side of Pagham, north of the harbour wall

On the right of this photograph are some of the new homes being built at the end of Summer Lane. The Church extends a warm welcome to the incoming residents. They will have good views of the fields, and of this loose-box which takes some of the Pagham Ponies to meet the local community.



<https://www.paghamponiesrescue.com/>



Nigel's work is reliant on generous donations.

Nigel Mundy, who manages Pagham Ponies, cares for rescued horses and ponies in fields adjoining Church Barton House.



Pagham church, with its newly-restored roof, is now clearly visible across the fields after pollarding of the very tall lime trees. This is a regular part of churchyard maintenance and careful management.



Pagham harbour and the western beach



The church spire is also clearly visible from the harbour and lagoon.

There have been many changes at the harbour mouth since last year: much land has been lost to the sea, and old landing stages from the 1940s have re-emerged.

Compare these photos with the 2020 Beating the Bounds report on the parish website. See also @SavePaghamBeach on Facebook.



The beach bursts into flower in spring, and brings even more beauty to this wonderful place.

We thank God for the life of Pagham Church, where worship has continued for hundreds of years. Please pray for its mission to spread the love of Christ throughout the parish.

Check out <http://paghamchurch.org/>, and see the *Beating the Bounds* page for this report, information about last year's walk, and a hymn to take us round the parish in May 2022!



Credit: Alan Dennis