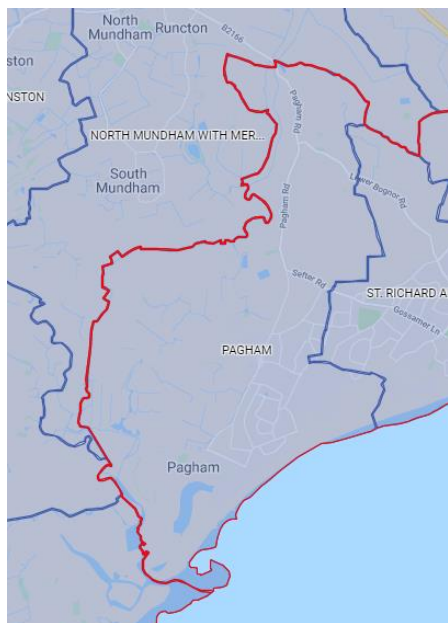


## Pagham Church - Beating the Bounds 2-6<sup>th</sup> May with Alison Blenkinsop

### Day 2

#### Tithe Barn Way, Aldwick Bay Estate, towards Lagness (undertaken on 6<sup>th</sup> May)

As we tour the parish, we thank God for Pagham and pray for the residents of our lovely village. The annual walk instigated some years ago by Revd Mark Eminson, our former vicar, doesn't follow the boundary exactly for practical reasons. The limits of the parish can be seen by clicking a link on this page on the Diocesan website: <https://www.chichester.anglican.org/parishes/>



Aldwick Bay Estate lies within the parish boundary. Its front gardens are spectacular in spring.



'The original intentions of the developer were that every house would have accommodation for staff and chauffeur and each garden be large enough for a tennis court! Early attempts at establishing strict standards on house design soon gave way to a more relaxed approach resulting in Georgian, Tudor, Dutch, Spanish and French influenced designs.'

[https://www.aldwickbaycompany.com/?page\\_id=52](https://www.aldwickbaycompany.com/?page_id=52)

Our route leads through the middle of the Bay Estate and on to Nyetimber Lane, then northwards to Rose Green, past Avisford Park. The boundary is to our west.

During lockdown, the play area in the park is deserted. Pagham Church has close ties with nearby Rose Green Infant & Junior Schools, which lie in the parish of St Richard's.



Pagham Church is a member of Churches Together in Bognor Regis & District. We value our links with other Churches and denominations, and miss the opportunity to meet together during the restrictions of the pandemic.

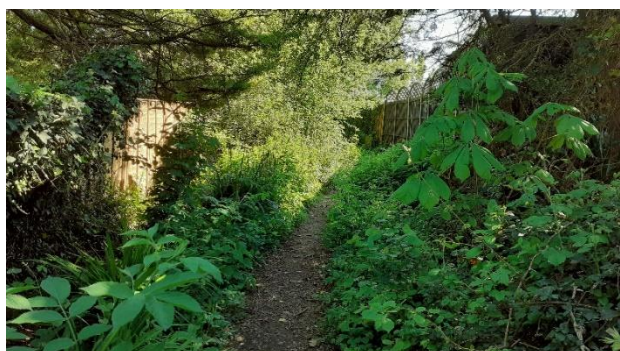


At Rose Green (in the parish of St Richard's, Gossamer Lane), we pass the RC church of St Anthony of Viareggio. The church started life as a bungalow, and was bequeathed by its owner to the Servite Friars who ministered in the area. It was dedicated as a church in May 1963.

We continue our walk past the shops in Rose Green Road, cross Hewarts Lane, and follow a footpath to the east of Copthorne Caravan Park.

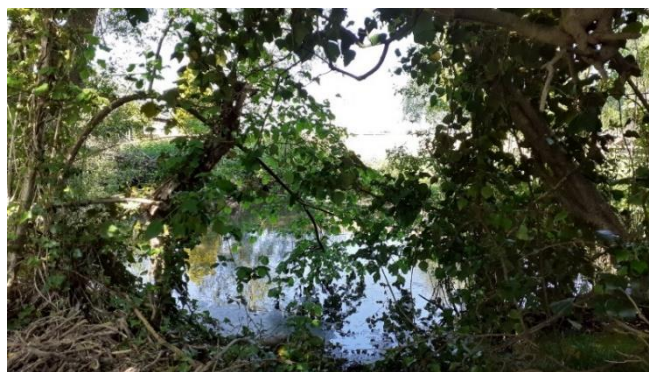


The path winds between the Caravan site and residential back gardens, and is popular with walkers and dogs. The narrow, leafy path makes the distancing required during the pandemic very difficult!



Looking southwards.

Hidden treasures!



We emerge from the path into open fields, and a footpath which leads to the farms of Lagness. In previous years, we have made this walk in a group. Our churchwarden Stephen Cox-Rusbridge and his family would welcome us into the garden at Copyhold Farm to enjoy our picnic lunch.



As the map shows, the parish boundary extends northwards almost to Manor Nurseries, but from Copyhold Farm we would cross Pagham Road to continue our walk along footpaths. Then we would walk south along Honer Lane, which leads from South Mundham. (This was too far for me to walk in early May, given the government restrictions on exercise during Covid-19 lockdown.)

Next week, leaving out that northern part of the parish, we will go west along Sefter Road, then south into Pagham Village. Our route will then take us to the north wall of Pagham Harbour.